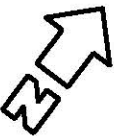


grass driveway for occasional use to provide access to level entrance terrace. Ground floor of converted barns will be accessible, via flush thresholds.

grass with honeycomb grass reinforcement mesh. Green in colour, LDP, 100% recycled, certified to DIN 38412 - neutral for environment, DIN4102 - approved for emergency access route, fire resistance, DIN IN ISO 124 and B145 approved for access roads. fully permeable.



additional native planting to existing hedge, to fill in gaps and provide flight lines for bats. See landscape note on Dwg 014-008.

⊕ External Lighting:
All fittings to be 'fully shielded' or 'full cutoff', with no light spill above 90 degrees from base of fitting. Security lights with motion sensors will be set to a minimum suitable timing for the location. New external lighting to be of a bat friendly specification (see note on drawing 014-009.)

additional native planting to attract wildlife and screen loft from distant view. See landscape note on Dwg 014-008.

existing gate for access to adjoining field

Mature Oak tree outside curtilage of the site, but with root protection area RPA extending to this line.

CATHERINE ROBERTS & STEVEN HARRIS - architecture and energy
One the Orchard, Llanellen Road, Llanfist, Abergavenny NP23 9NE mail@crah-arch.co.uk 01873 853238

client Patrick Holford
project Coal Pit Farm
Forest Coal Pit
NP7

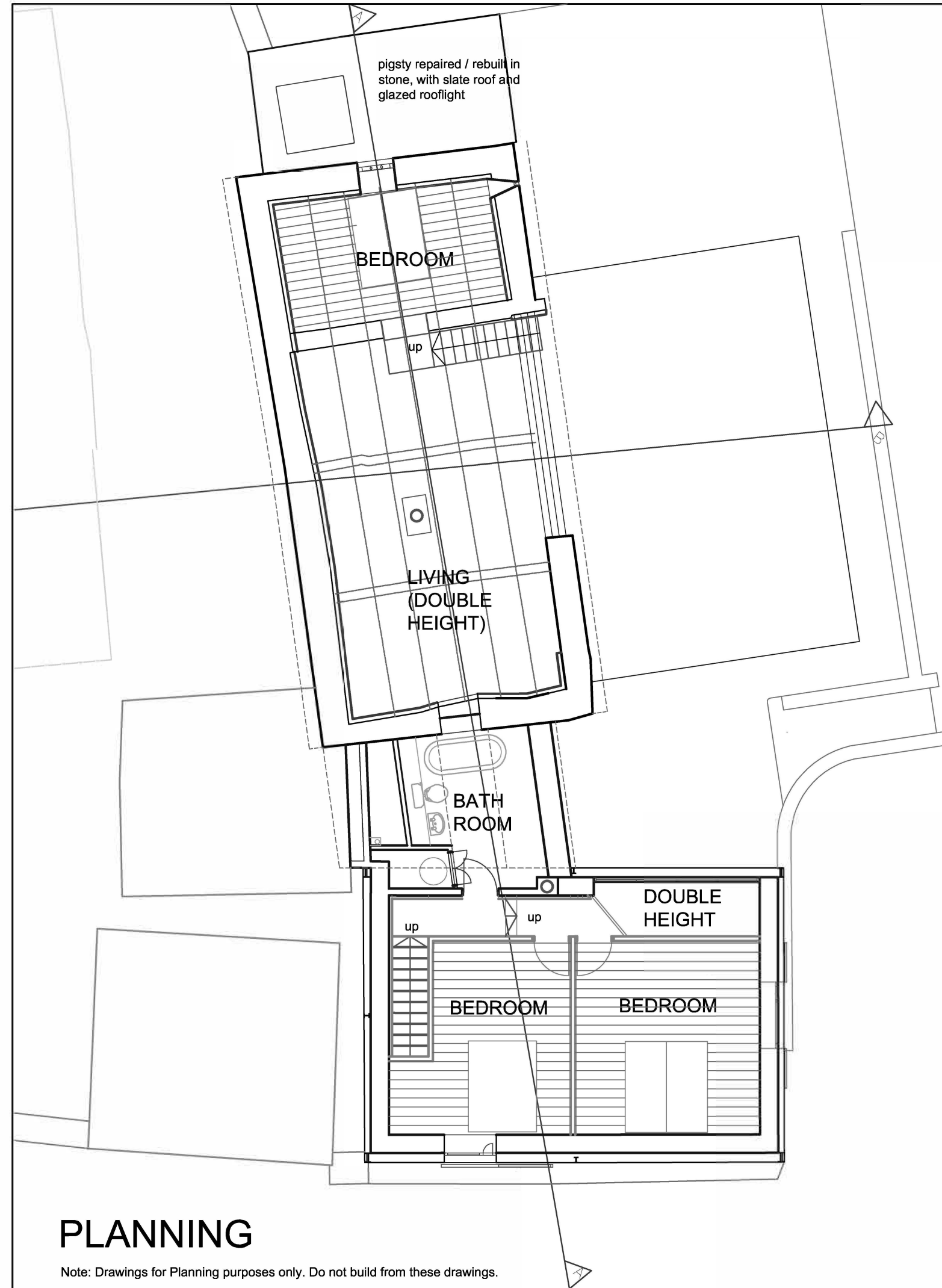
drawing
**GROUND FLOOR PLAN
AS PROPOSED**

date Jan 2015 scale 1:100 @A3 number 014-012 revision C

Rev C 17.6.15 Lighting added
Rev B 16.6.15 Layout revised
Rev A 22.5.15 Revisions for Planning

PLANNING

Note: Drawings for Planning purposes only. Do not build from these drawings.



PLANNING

Note: Drawings for Planning purposes only. Do not build from these drawings.

Rev A 22.5.15 Revisions for Planning

CATHERINE ROBERTS & STEVEN HARRIS - architecture and energy				
One the Orchard, Llanellen Road, Llanfoist, Abergavenny NP7 9NF mail@crsh-arch.co.uk 01873 853238				
client	Patrick Holford	drawing		
project	Coal Pit Farm	FIRST FLOOR PLAN AS PROPOSED		
	Forest Coal Pit NP7			
date	Jan 2015	scale	1:100 @ A3	number 014-013
				revision A